

Fortisol-30. All Data Report 3/19/2013, 2:27:15 PM

Method Parameters

Analysis Lines

Label	El Wavelen.	Type	I/S	Bkg Mode	PPP	OBCL	OBCR
Ag 328.068	Ag 328.068	Analyte	-	Fitted	2		

Conditions Sets (All lines share a single condition set)

Pwr(kW)	PlasFlow(L/min)	AuxFlow(L/min)	NebFlow(L/min)	Replicate Time(s)	Stab Time(s)	Multi Frame
1.20	15.0	1.50	0.75	5.000	15	On

Sample Introduction

Sample Uptake(s)	Rinse Time(s)	Pump Rate(rpm)	Fast Pump
30	10	15	On

General Settings

Replicates
3

Calibration Settings

Calib. Mode	No. Standards	Corr Coeff Limit	Reslopes
Quantitative	1	0.995000	Off

Standard Concentration

El Units	Silver
Ag ppm	40.00000

Calibration Parameters

Label	Thru. Blk	W/Fit	Curve Type	Max Error	Min Conc	Max Conc	E/Curve %	U/Curve %
Ag 328.068	Off	On	Linear	5.0	0.00000	44.00000	25	400

Units

Unit Name	Multiplier	Divider
ppm	1	1E6

Columns

Column
Ag 328.068

Display Column Flags

Column	o	QC	S	e	uncal	I	n	a	u	v	x	b	p	m	d
Ag 328.068	x	x	x	x	x	x	x	x	x	x	x	x	x	x	x

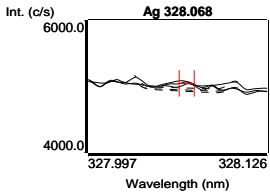
Blank (Blk)

3/15/2013, 3:21:46 PM

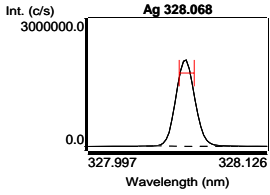
Tube 1

Label	Sol'n Conc.	Units	SD(Int)	%RSD(Int)	Int. (c/s)
Ag 328.068	0.000000	ppm	27.764	28.6	97.0871

Fortisol-30. All Data Report 3/19/2013, 2:27:15 PM



Silver (Std)	3/19/2013, 2:04:51 PM	Tube 2			
Label	Sol'n Conc.	Units	SD(Int)	%RSD(Int)	Int. (c/s)
Ag 328.068	40.0000	ppm	4621.731	0.3	1715948



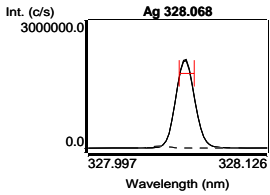
Ag 328.068 Calibration (ppm) **3/19/2013, 2:04:51 PM** **Correlation Coefficient: 1.000000**

Label	Flags	Int. (c/s)	Std Conc.	Calc Conc.	Error	%Error
Blank		97.0871	0.000000	0.000000	-	-
Silver		1715948	40.0000	40.0000	0.000000	0.0

Curve Type: Linear Equation: $y = 42896.3 x + 97.1$

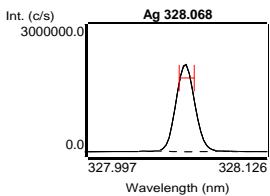
Total Silver #1 (Samp) **3/19/2013, 2:21:12 PM** **Tube 3**
Weight: 1 **Volume: 1** **Dilution: 1**

Label	Sol'n Conc.	Units	SD	%RSD	Int. (c/s)	Calc Conc.
Ag 328.068	40.7957	ppm	0.375703	0.9	1750082	40.7957 ppm



Total Silver #2 (Samp) **3/19/2013, 2:08:52 PM** **Tube 4**
Weight: 1 **Volume: 1** **Dilution: 1**

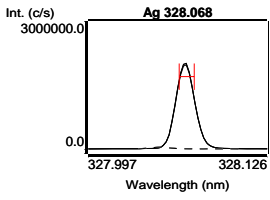
Label	Sol'n Conc.	Units	SD	%RSD	Int. (c/s)	Calc Conc.
Ag 328.068	40.2265	ppm	0.188136	0.5	1725663	40.2265 ppm



Fortisol-30. All Data Report 3/19/2013, 2:27:15 PM

Ionic Silver #1 (Samp) **3/19/2013, 2:16:05 PM** **Tube 5**
Weight: 1 **Volume: 1** **Dilution: 1**

Label	Sol'n Conc.	Units	SD	%RSD	Int. (c/s)	Calc Conc.
Ag 328.068	39.4041	ppm	0.394444	1.0	1690386	39.4041 ppm



Ionic Silver #2 (Samp) **3/19/2013, 2:19:11 PM** **Tube 6**
Weight: 1 **Volume: 1** **Dilution: 1**

Label	Sol'n Conc.	Units	SD	%RSD	Int. (c/s)	Calc Conc.
Ag 328.068	39.6819	ppm	0.220762	0.6	1702301	39.6819 ppm

