

Method Parameters

Analysis Lines

Label	El Wavelen.	Type	I/S	Bkg Mode	PPP	OBCL	OBCR
Ag 328.068	Ag 328.068	Analyte	-	Fitted	2		

Conditions Sets (All lines share a single condition set)

Pwr(kW)	PlasFlow(L/min)	AuxFlow(L/min)	NebFlow(L/min)	Replicate	Time(s)	Stab Time(s)	Multi Frame
1.20	15.0	1.50	0.75	5.000	15	On	

Sample Introduction

Sample Uptake(s)	Rinse Time(s)	Pump Rate(rpm)	Fast Pump
30	10	15	On

General Settings

Replicates
3

Calibration Settings

Calib. Mode	No. Standards	Corr Coeff Limit	Reslopes
Quantitative	1	0.995000	Off

Standard Concentration

El Units	Silver
Ag ppm	30.00000

Calibration Parameters

Label	Thru. Blk	W/Fit	Curve Type	Max Error	Min Conc	Max Conc	E/Curve %	U/Curve %
Ag 328.068	Off	On	Linear	5.0	0.00000	33.00000	25	400

Units

Unit Name	Multiplier	Divider
ppm	1	1E6

Columns

Column
Ag 328.068

Display Column Flags

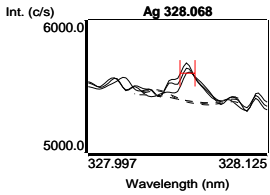
Column	o	QC	S	e	uncal	I	n	a	u	v	x	b	p	m	d
Ag 328.068	x	x	x	x	x	x	x	x	x	x	x	x	x	x	x

Blank (Blk)

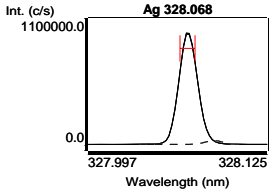
7/22/2010, 9:40:50 AM

Tube 1

Label	Sol'n Conc.	Units	SD(Int)	%RSD(Int)	Int. (c/s)
Ag 328.068	0.000000	ppm	27.990	13.3	209.864



Silver (Std)	8/16/2010, 11:22:46 AM	Tube 2			
Label	Sol'n Conc.	Units	SD(Int)	%RSD(Int)	Int. (c/s)
Ag 328.068	30.0000	ppm	5437.970	0.7	833764



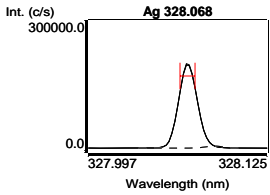
Ag 328.068 Calibration (ppm) **8/16/2010, 11:22:46 AM** **Correlation Coefficient: 1.000000**

Label	Flags	Int. (c/s)	Std Conc.	Calc Conc.	Error	%Error
Blank		209.864	0.000000	0.000000	-	-
Silver		833764	30.0000	30.0000	0.000000	0.0

Curve Type: Linear Equation: $y = 27785.1 x + 209.9$

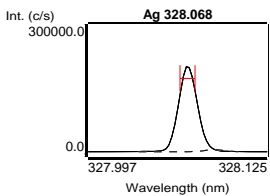
Total Silver #1 (Samp) **8/16/2010, 12:15:53 PM** **Tube 3**
Weight: 1 **Volume: 1** **Dilution: 1**

Label	Sol'n Conc.	Units	SD	%RSD	Int. (c/s)	Calc Conc.
Ag 328.068	5.98043	ppm	0.040364	0.7	166377	5.98043 ppm



Total Silver #2 (Samp) **8/16/2010, 12:17:29 PM** **Tube 4**
Weight: 1 **Volume: 1** **Dilution: 1**

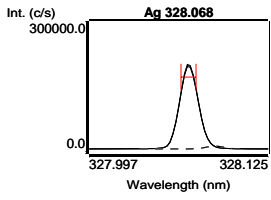
Label	Sol'n Conc.	Units	SD	%RSD	Int. (c/s)	Calc Conc.
Ag 328.068	6.06527	ppm	0.017498	0.3	168734	6.06527 ppm



Helder-CS. All Data Report 8/16/2010, 12:25:02 PM

Ionic Silver #1 (Samp) **8/16/2010, 12:22:28 PM** **Tube 5**
Weight: 1 **Volume: 1** **Dilution: 1**

Label	Sol'n Conc.	Units	SD	%RSD	Int. (c/s)	Calc Conc.
Ag 328.068	5.95206	ppm	0.068517	1.2	165589	5.95206 ppm



Ionic Silver #2 (Samp) **8/16/2010, 12:24:04 PM** **Tube 6**
Weight: 1 **Volume: 1** **Dilution: 1**

Label	Sol'n Conc.	Units	SD	%RSD	Int. (c/s)	Calc Conc.
Ag 328.068	5.95567	ppm	0.088169	1.5	165689	5.95567 ppm

