

**Method Parameters**

**Analysis Lines**

Label	El	Wavelen.	Type	I/S	Bkg Mode	PPP	OBCL	OBCR
Ag 328.068	Ag	328.068	Analyte	-	Fitted	2		

**Conditions Sets (All lines share a single condition set)**

Pwr(kW)	PlasFlow(L/min)	AuxFlow(L/min)	NebFlow(L/min)	Replicate Time(s)	Stab Time(s)	Multi Frame
1.20	15.0	1.50	0.75	5.000	15	On

**Sample Introduction**

Sample Uptake(s)	Rinse Time(s)	Pump Rate(rpm)	Fast Pump
30	10	15	On

**General Settings**

Replicates
3

**Calibration Settings**

Calib. Mode	No. Standards	Corr Coeff Limit	Reslopes
Quantitative	1	0.995000	Off

**Standard Concentration**

El	Units	Silver
Ag	ppm	30.00000

**Calibration Parameters**

Label	Thru. Blk	W/Fit	Curve Type	Max Error	Min Conc	Max Conc	E/Curve %	U/Curve %
Ag 328.068	Off	On	Linear	5.0	0.00000	33.00000	25	400

**Units**

Unit Name	Multiplier	Divider
ppm	1	1E6

**Columns**

Column
Ag 328.068

**Display Column Flags**

Column	o	QC	S	e	uncal	I	n	a	u	v	x	b	p	m	d
Ag 328.068	x	x	x	x	x	x	x	x	x	x	x	x	x	x	x

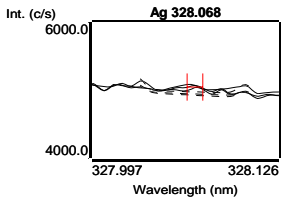
**Blank (Blk)**

3/15/2013, 3:21:46 PM

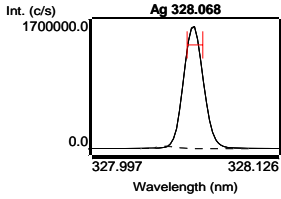
Tube 1

Label	Sol'n Conc.	Units	SD(Int)	%RSD(Int)	Int. (c/s)
Ag 328.068	0.000000	ppm	27.764	28.6	97.0871

Midisol-20. All Data Report 3/15/2013, 4:41:25 PM



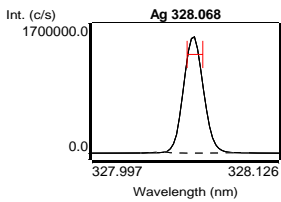
Label	Sol'n Conc.	Units	SD(Int)	%RSD(Int)	Int. (c/s)
Ag 328.068	30.0000	ppm	3946.600	0.3	1353336



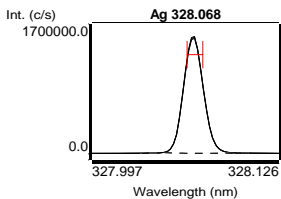
Label	Flags	Int. (c/s)	Std Conc.	Calc Conc.	Error	%Error
Blank		97.0871	0.000000	0.000000	-	-
Silver		1353336	30.0000	30.0000	0.000000	0.0

Curve Type: Linear Equation:  $y = 45108.0 x + 97.1$

Label	Sol'n Conc.	Units	SD	%RSD	Int. (c/s)	Calc Conc.
Ag 328.068	28.5914	ppm	0.056476	0.2	1289798	28.5914 ppm



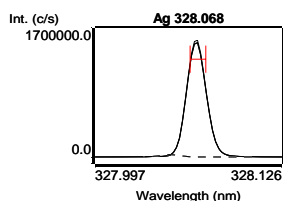
Label	Sol'n Conc.	Units	SD	%RSD	Int. (c/s)	Calc Conc.
Ag 328.068	28.5992	ppm	0.250247	0.9	1290149	28.5992 ppm



Midisol-20. All Data Report 3/15/2013, 4:41:25 PM

**Ionic Silver #1 (Samp)**                      **3/15/2013, 4:24:12 PM**                      **Tube 5**  
**Weight: 1**                                      **Volume: 1**                                      **Dilution: 1**

Label	Sol'n Conc.	Units	SD	%RSD	Int. (c/s)	Calc Conc.
Ag 328.068	28.3045	ppm	0.348540	1.2	1276854	28.3045 ppm



**Ionic Silver #2 (Samp)**                      **3/15/2013, 4:25:48 PM**                      **Tube 6**  
**Weight: 1**                                      **Volume: 1**                                      **Dilution: 1**

Label	Sol'n Conc.	Units	SD	%RSD	Int. (c/s)	Calc Conc.
Ag 328.068	28.2751	ppm	0.320338	1.1	1275529	28.2751 ppm

