

Oxysilver. All Data Report 6/30/2010, 2:28:14 PM

Method Parameters

Analysis Lines

Label	El	Wavelen.	Type	I/S	Bkg Mode	PPP	OBCL	OBCR
Ag 328.068	Ag	328.068	Analyte	-	Fitted	2		

Conditions Sets (All lines share a single condition set)

Pwr(kW)	PlasFlow(L/min)	AuxFlow(L/min)	NebFlow(L/min)	Replicate Time(s)	Stab Time(s)	Multi Frame
1.20	15.0	1.50	0.75	5.000	15	On

Sample Introduction

Sample Uptake(s)	Rinse Time(s)	Pump Rate(rpm)	Fast Pump
30	10	15	On

General Settings

Replicates
3

Calibration Settings

Calib. Mode	No. Standards	Corr Coeff Limit	Reslopes
Quantitative	1	0.995000	Off

Standard Concentration

El	Units	Silver
Ag	ppm	10.00000

Calibration Parameters

Label	Thru. Blk	W/Fit	Curve Type	Max Error	Min Conc	Max Conc	E/Curve %	U/Curve %
Ag 328.068	Off	On	Linear	5.0	0.00000	11.00000	25	400

Units

Unit Name	Multiplier	Divider
ppm	1	1E6

Columns

Column
Ag 328.068

Display Column Flags

Column	o	QC	S	e	uncal	I	n	a	u	v	x	b	p	m	d
Ag 328.068	x	x	x	x	x	x	x	x	x	x	x	x	x	x	x

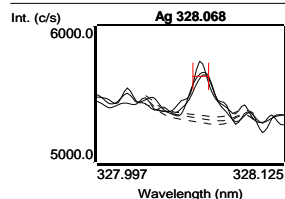
Blank (Blk)

6/30/2010, 2:09:01 PM

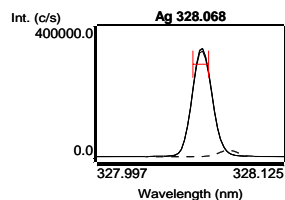
Tube 1

Label	Sol'n Conc.	Units	SD(Int)	%RSD(Int)	Int. (c/s)
Ag 328.068	0.000000	ppm	30.653	9.9	310.912

Oxysilver. All Data Report 6/30/2010, 2:28:14 PM



Standard 1 (Std)	6/30/2010, 2:11:31 PM	Tube 2		
Label	Sol'n Conc.	Units	SD(Int) %RSD(Int)	Int. (c/s)
Ag 328.068	10.0000	ppm	3740.762	1.3 278042



Ag 328.068 Calibration (ppm) 6/30/2010, 2:11:31 PM Correlation Coefficient: 1.000000

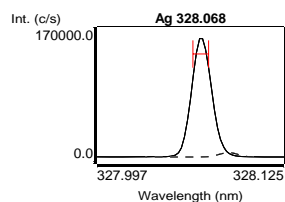
Label	Flags	Int. (c/s)	Std Conc.	Calc Conc.	Error	%Error
Blank		310.912	0.000000	0.000000	-	-
Standard 1		278042	10.0000	10.0000	0.000000	0.0

Curve Type: Linear

Equation: $y = 27773.1 x + 310.9$

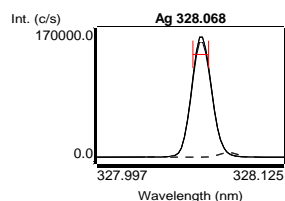
Total Silver (Samp) 6/30/2010, 2:24:17 PM Tube 3
 Weight: 1 Volume: 1 Dilution: 1

Label	Sol'n Conc.	Units	SD	%RSD	Int. (c/s)	Calc Conc.
Ag 328.068	4.69197	ppm	0.013725	0.3	130621	4.69197 ppm



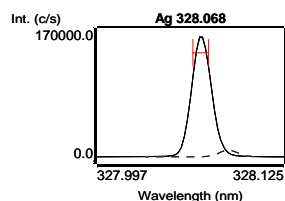
Total Silver (Samp) 6/30/2010, 2:25:52 PM Tube 4
 Weight: 1 Volume: 1 Dilution: 1

Label	Sol'n Conc.	Units	SD	%RSD	Int. (c/s)	Calc Conc.
Ag 328.068	4.68929	ppm	0.108655	2.3	130547	4.68929 ppm

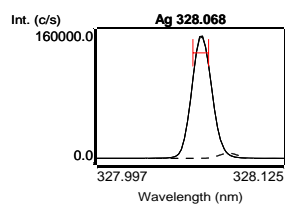


Oxysilver. All Data Report 6/30/2010, 2:28:14 PM

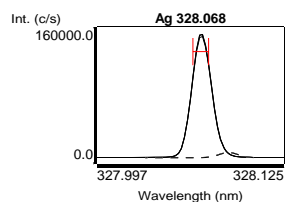
Total Silver (Samp)	6/30/2010, 2:27:32 PM	Tube 5				
Weight: 1	Volume: 1	Dilution: 1				
Label	Sol'n Conc.	Units	SD	%RSD	Int. (c/s)	Calc Conc.
Ag 328.068	4.73406	ppm	0.019886	0.4	131790	4.73406 ppm



Ionic Silver (Samp)	6/30/2010, 2:19:17 PM	Tube 6				
Weight: 1	Volume: 1	Dilution: 1				
Label	Sol'n Conc.	Units	SD	%RSD	Int. (c/s)	Calc Conc.
Ag 328.068	4.50690	ppm	0.023284	0.5	125481	4.50690 ppm



Ionic Silver (Samp)	6/30/2010, 2:20:53 PM	Tube 7				
Weight: 1	Volume: 1	Dilution: 1				
Label	Sol'n Conc.	Units	SD	%RSD	Int. (c/s)	Calc Conc.
Ag 328.068	4.52546	ppm	0.042792	0.9	125997	4.52546 ppm



Ionic Silver (Samp)	6/30/2010, 2:22:28 PM	Tube 8				
Weight: 1	Volume: 1	Dilution: 1				
Label	Sol'n Conc.	Units	SD	%RSD	Int. (c/s)	Calc Conc.
Ag 328.068	4.53300	ppm	0.100344	2.2	126206	4.53300 ppm

