

Method Parameters

Analysis Lines

Label	El Wavelen.	Type	I/S	Bkg Mode	PPP	OBCL	OBCR
Ag 328.068	Ag 328.068	Analyte	-	Fitted	2		

Conditions Sets (All lines share a single condition set)

Pwr(kW)	PlasFlow(L/min)	AuxFlow(L/min)	NebFlow(L/min)	Replicate	Time(s)	Stab Time(s)	Multi Frame
1.20	15.0	1.50	1.00	5.000	15	On	

Sample Introduction

Sample Uptake(s)	Rinse Time(s)	Pump Rate(rpm)	Fast Pump
30	10	15	On

General Settings

Replicates
3

Calibration Settings

Calib. Mode	No. Standards	Corr Coeff Limit	Reslopes
Quantitative	1	0.995000	Off

Standard Concentration

El Units	Silver
Ag ppm	30.00000

Calibration Parameters

Label	Thru. Blk	W/Fit	Curve Type	Max Error	Min Conc	Max Conc	E/Curve %	U/Curve %
Ag 328.068	Off	On	Linear	5.0	0.00000	33.00000	25	400

Units

Unit Name	Multiplier	Divider
mg/L	1	1E6
ppm	1	1E6

Columns

Column
Ag 328.068

Display Column Flags

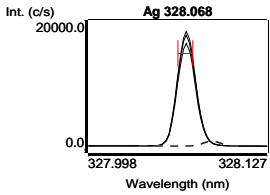
Column	o	QC	S	e	uncal	I	n	a	u	v	x	b	p	m	d
Ag 328.068	x	x	x	x	x	x	x	x	x	x	x	x	x	x	x

Blank (Blk)

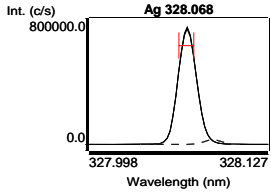
6/26/2015, 2:01:43 PM

Tube 1

Label	Sol'n Conc.	Units	SD(Int)	%RSD(Int)	Int. (c/s)
Ag 328.068	0.000000	ppm	800.390	5.6	14246.3



Label	Sol'n Conc.	Units	SD(Int)	%RSD(Int)	Int. (c/s)
Ag 328.068	30.0000	ppm	5033.464	0.8	626515

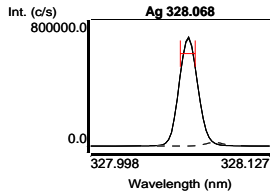


Label	Flags	Int. (c/s)	Std Conc.	Calc Conc.	Error	%Error	Blank
Blank		14246.3	0.000000	0.000000	-	-	
Silver		626515	30.0000	30.0000	0.000000	0.0	

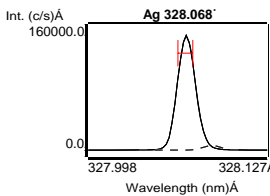
Curve Type: Linear

Equation: $y = 20409.0 x + 14246.3$

Label	Sol'n Conc.	Units	SD	%RSD	Int. (c/s)	Calc Conc.
Ag 328.068	25.3021	ppm	0.140512	0.6	586146	25.3021 ppm



Label	Sol'n Conc.	Units	SD	%RSD	Int. (c/s)	Calc Conc.
Ag 328.068	5.28962	ppm	0.025616	0.5	122202	5.28962 ppm



SanteNatures-20-15006A. All Data Report 10/14/2015, 11:57:19 AM

Ionic Sample 2: (Samp) **8/6/2015, 11:57:46 AM** **Tube 5**
Weight: 1 **Volume: 1** **Dilution: 1**

Label	Sol'n Conc.	Units	SD	%RSD	Int. (c/s)	Calc Conc.
Ag 328.068	5.18808	ppm	0.041415	0.8	120130	5.18808 ppm

