

SuperSilverSol. All Data Report 7/31/2010, 12:46:46 PM

Method Parameters**Analysis Lines**

Label	El	Wavelen.	Type	I/S	Bkg Mode	PPP	OBCL	OBCR
Ag 328.068	Ag	328.068	Analyte	-	Fitted	2		

Conditions Sets (All lines share a single condition set)

Pwr(kW)	PlasFlow(L/min)	AuxFlow(L/min)	NebFlow(L/min)	Replicate Time(s)	Stab Time(s)	Multi Frame
1.20	15.0	1.50	0.75	5.000	15	On

Sample Introduction

Sample Uptake(s)	Rinse Time(s)	Pump Rate(rpm)	Fast Pump
30	10	15	On

General Settings**Replicates**

3

Calibration Settings

Calib. Mode	No. Standards	Corr Coeff Limit	Reslopes
Quantitative	1	0.995000	Off

Standard Concentration

El	Units	Silver
Ag	ppm	10.00000

Calibration Parameters

Label	Thru. Blk	W/Fit	Curve Type	Max Error	Min Conc	Max Conc	E/Curve %	U/Curve %
Ag 328.068	Off	On	Linear	5.0	0.00000	11.00000	25	400

Units

Unit Name	Multiplier	Divider
ppm	1	1E6

Columns**Column**

Ag 328.068

Display Column Flags

Column	o	QC	S	e	uncal	I	n	a	u	v	x	b	p	m	d
Ag 328.068	x	x	x	x	x	x	x	x	x	x	x	x	x	x	x

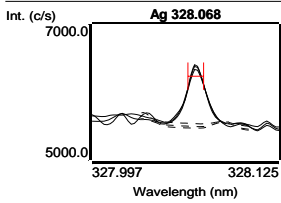
Blank (Blk)

7/31/2010, 12:31:16 PM

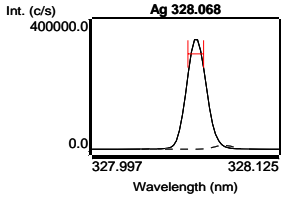
Tube 1

Label	Sol'n Conc.	Units	SD(Int)	%RSD(Int)	Int. (c/s)
Ag 328.068	0.000000	ppm	53.436	7.3	731.813

SuperSilverSol. All Data Report 7/31/2010, 12:46:46 PM



Silver (Std)	7/31/2010, 12:42:22 PM	Tube 2			
Label	Sol'n Conc.	Units	SD(Int)	%RSD(Int)	Int. (c/s)
Ag 328.068	10.0000	ppm	919.579	0.3	287897

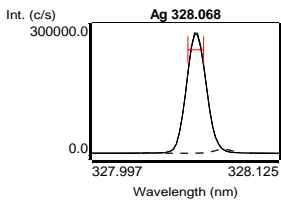


Ag 328.068 Calibration (ppm)	7/31/2010, 12:42:22 PM	Correlation Coefficient: 1.000000				
Label	Flags	Int. (c/s)	Std Conc.	Calc Conc.	Error	%Error
Blank		731.813	0.000000	0.000000	-	-
Silver		287897	10.0000	10.0000	0.000000	0.0

Curve Type: Linear

Equation: $y = 28716.5 x + 731.8$

Total Silver (Samp)	7/31/2010, 12:46:22 PM	Tube 3				
Weight: 1	Volume: 1	Dilution: 1				
Label	Sol'n Conc.	Units	SD	%RSD	Int. (c/s)	Calc Conc.
Ag 328.068	8.14677	ppm	0.060100	0.7	234678	8.14677 ppm



Ionic Silver (Samp)	7/31/2010, 12:44:25 PM	Tube 4				
Weight: 1	Volume: 1	Dilution: 1				
Label	Sol'n Conc.	Units	SD	%RSD	Int. (c/s)	Calc Conc.
Ag 328.068	7.80562	ppm	0.026693	0.3	224882	7.80562 ppm

